

# GripplE T-Clip 1 & 2

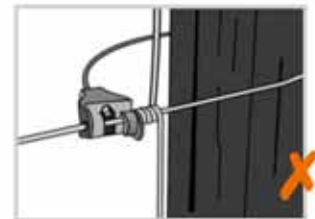
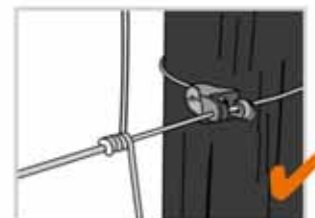
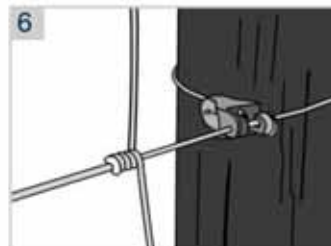
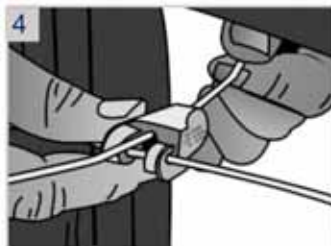
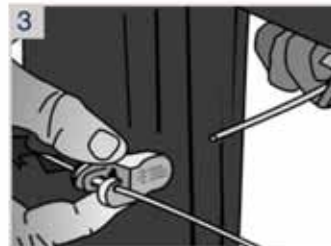
The T-Clip is a revolutionary new way to secure a fence at an end post.

## ADVANTAGES

- Up to 5 times faster than knotting.
- Ideal for awkward, tight spaces particularly horse fencing.
- Simple twist and push fit – ideal for use with very hard wires where knotting is cumbersome.
- Neat professional finish.
- Two sizes available for both stock fencing or barbed wire applications.



## INSTALLATION



## SPECIFICATION

Product	Wire Diameter (mm)	Wire Gauge - ga
T-Clip	2.00 - 3.25mm plain wire	14 - 10
	1.6 / 1.7mm HT Barbed	15 1/2 Barb
T-Clip 2	1.80mm Barbed	15
	2.00mm Barbed	14 ga Barb
	2.50 Barbed	12 1/2 ga Barb

## TIPS

- Always tighten the T-Clip as close to the post as possible, to avoid any slack over time.
- After installation, bend the wire back for safety.
- Install the T-Clip with the GripplE logo reading correctly, this makes the wire easier to bend back.
- Use a GripplE Plus Medium or GripplE Barb to join and tension the wire in the centre.