

10-40 Watt Adjustable Solar Panel Mounting Bracket

Mounting Instructions



Step 1:

Attach post bracket to post with two 3/8" x 4" lag screws (included). Install with twin bolt holes at top of post bracket as circled. NOTE: Mount as far above ground as practical, generally the higher the better.



Step 2:

Attach panel bracket to solar panel. Start by sliding the panel hangers at the top of the bracket under the solar panel frame (A). Be sure to center the solar panel on the bracket. Attach panel to bracket with two self-tapping screws (included).



A.

B.



Step 3:

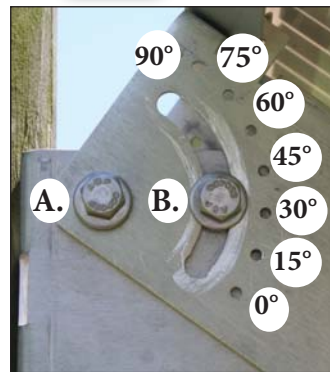


A.



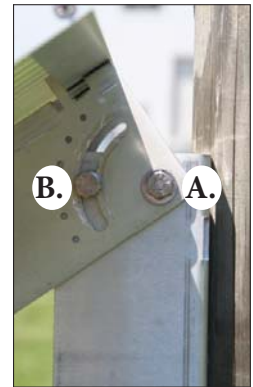
Use two bolts to install the channel clamp to bottom of solar panel. The channel clamp fits between the frame of the solar panel and the panel bracket with the large flat side facing the solar panel. Bolts fasten via the slots on the panel bracket.

Step 4:



A.

B.



B.

A.

Attach solar panel and panel bracket to post bracket using bolts (included). First, fasten the two bolts closest to the post (A). Next, locate desired angle of panel tilt using the adjustable slot. Reference holes are in increments of 15°. Once mounting bracket is set at desired angle, install last two bolts (B) to secure in place.

Step 5:

Slots on the side of the panel bracket are for mounting the appropriate solar controller.

